

CFUW and GWI

The past, the present, the future

The Motion

- At the CFUW national meeting in June, club representatives will be asked to vote on the following motion put forth by the St. Thomas club
 - “Moved that: In Canadian Federation of University Women Articles and Bylaws-Articles, strike out Article 4-Membership in International Federation of University Women (IFUW)”.
- Following is information to help sort through this issue

History

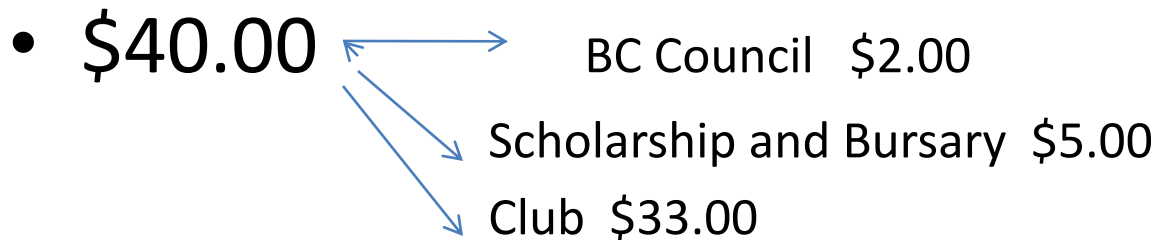
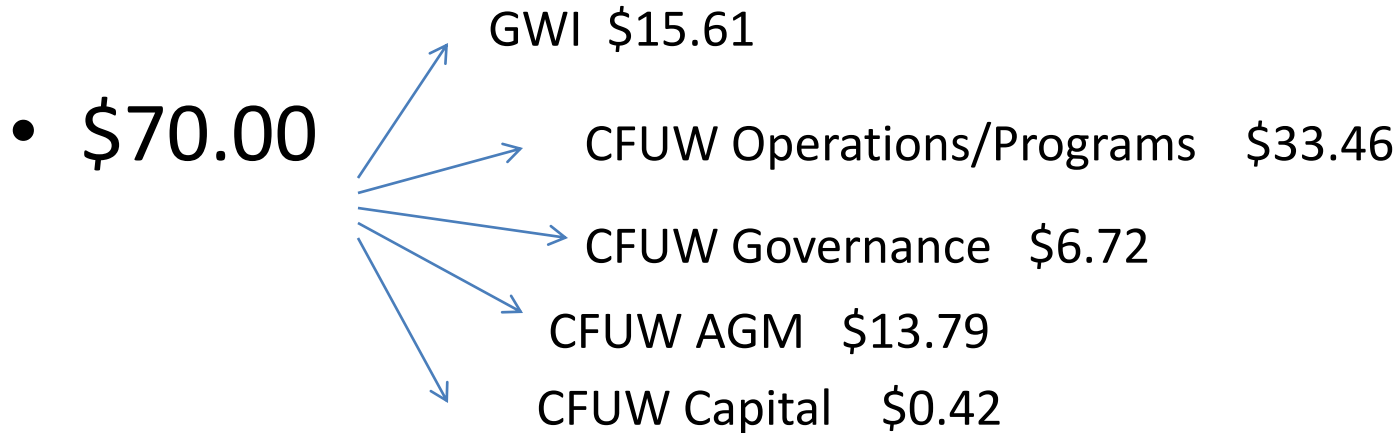
- Victoria Club
 - Founded in 1908
 - 250 members; 4th largest in CFUW
 - One of six founding clubs of CFUW
- CFUW
 - Founded in 1919
 - 8000+ members in 100 member clubs; largest member of IFUW/GWI
 - One of three (with Great Britain and USA) founding federations of IFUW

History, continued

- IFUW/GWI
 - Founded in 1919
 - Approximately 23,000 members in sixty countries with individual members in 40 more countries
 - Dues from CFUW account for 50% of revenue and 40% of the total budget

CFUW-Victoria Dues

- C\$110.00 per member (\$70.00 to CFUW National; \$40.00 to Victoria Club)



Governance

CFUW

- CFUW is the only NFA that has a head office and staff
- Board
 - President and 10 VPs
- Staff
 - In Ottawa
 - Five

IFUW

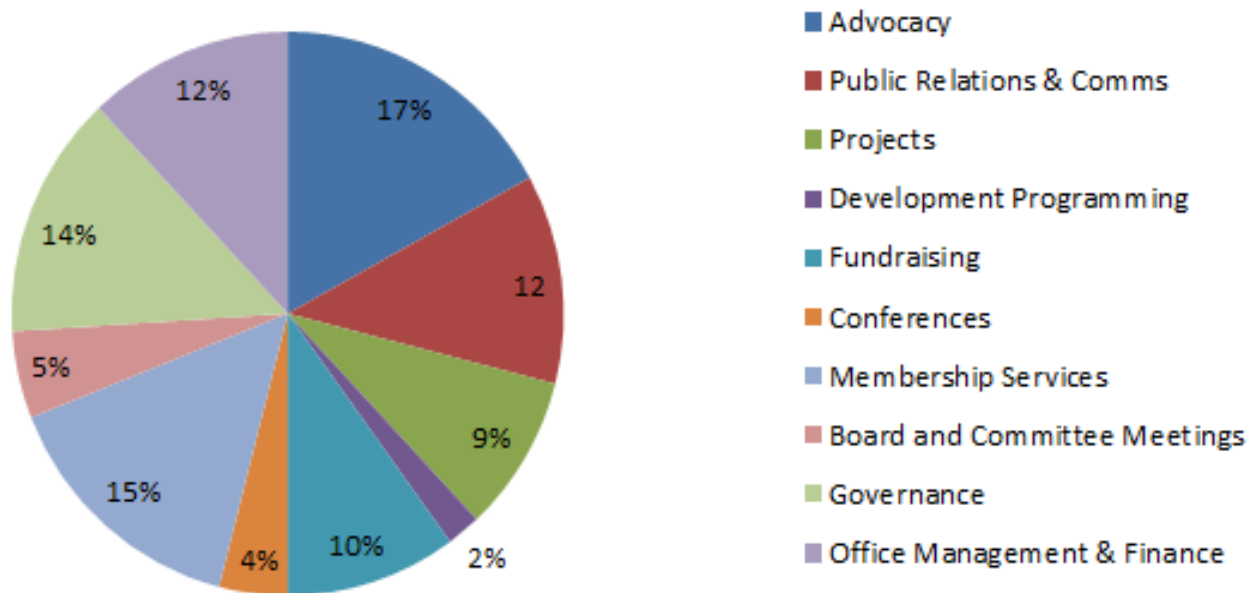
- Board
 - President, four VPs and one Treasurer
- Staff
 - In Geneva
 - Five

GWI-Financial Statement

- From Financial statement dated Sept 30, 2015 in CHF
 - Income
 - 428,989
 - Expenses
 - 136, 615 (Advocacy, projects, Fellowships, BRPID)
 - 126,155 (PR, Communication, Fundraising, conference)
 - 72, 251 (Membership development)
 - 97,821 (Governance)
 - 58,269 (Support Management)
 - Transfers
 - (16,410) (Investment results)
 - Excess Income or Expenditure ()
 - (78,532)

GWI-Spending

GWI Spending as of September 2015 ~\$657,940 CAD Percentage



GWI- Accomplishments

- Administration
 - Name change; rebranding; updated website; tax exempt status
- Seminars/Workshops/ Information
 - Capacity building seminars in Asia, SA, Europe, Africa; miscellaneous communication, webinars; membership development workshops
- Conferences
 - Participated in a variety of conferences
- Fundraising
 - GlobalGiving; support in kind with Orange
- Projects/Fund administration
 - Set up (with NFAs) Girls' Choices; Teachers for Rural Futures; administered Bina Roy and Hegg-Hoffett

GWI-Issues

Governance

- Issues have been identified with the governance of GWI
 - Electronic voting used streamline process (eg., to ratify the name change from IFUW to GWI)
 - Constitution states that changes are to be made by the General Assembly; “..expediency (is) not permissible ...to violate constitutions in any known democratic procedure...”

GWI-Issues, continued

Governance

- Ignored rules regulating the appointment/accrediting of delegates, voting, quorum
 - GWI board appointed its own board members to vote on behalf of NFAs that had not submitted voting delegates
 - Constitution does not authorize board members to act if an NFA does not
 - Board members are not permitted to vote twice
- Circular 11-discussion on amending the constitution
 - Information was incomplete; timeline was unrealistic
- Questions raised by CFUW and others regarding procedure and requests for information have been ignored or incompletely and unsatisfactorily answered

GWI-Issues, continued

Fiscal Planning and Budgeting

- GWI continues to run deficits
- Reserves and contingency funds are being depleted
- No known strategy for future revenue
- No transparency
 - Fundraising strategy was not disclosed even after two requests from CFUW

GWI-Issues, continued

Does GWI meet CFUW's Needs?

- Could Canadian funds now going to GWI be better used for our own projects-domestic and international?
 - CFUW dues account for 40% of GWI revenue (before the withdrawal of Netherlands and Germany!)
- GWI does not have any scholarships even though promoting education is central to both its vision and mission
- Most of the projects listed in the documents recently received from GWI are, in fact, projects being lead by the NFAs, not GWI
- Most of the seminars, workshops, current projects etc. are geared toward the smaller developing NFAs and are not relevant for Canada's needs

Dues Increase-GWI

- In February, we were informed that GWI is proposing to increase dues from CHF 15.5 to CHF 30 effective 2017
- In 2016, CFUW submitted C\$172,697 to GWI
- In 2017 (if the resolution is passed), that will increase to C\$338,310
- Document prepared by GWI indicates CHF 50 is needed to balance the budget
 - Is a further increase in dues to be expected in three years?

At a crossroads

- We are at a crossroads
 - The question you need to ask is what do you want the future of CFUW to be
 - It comes down to a choice to support a strong national organization or GWI
 - It is not likely that we can continue to support both as we are now
- Victoria is the fourth largest club in CFUW so our voice matters-Let it be heard!